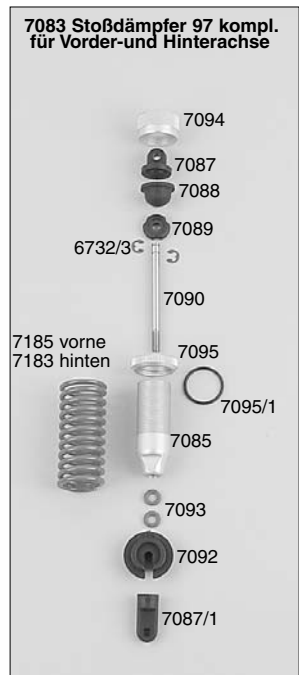




Die zum Chassis passenden Karosserie-Sets

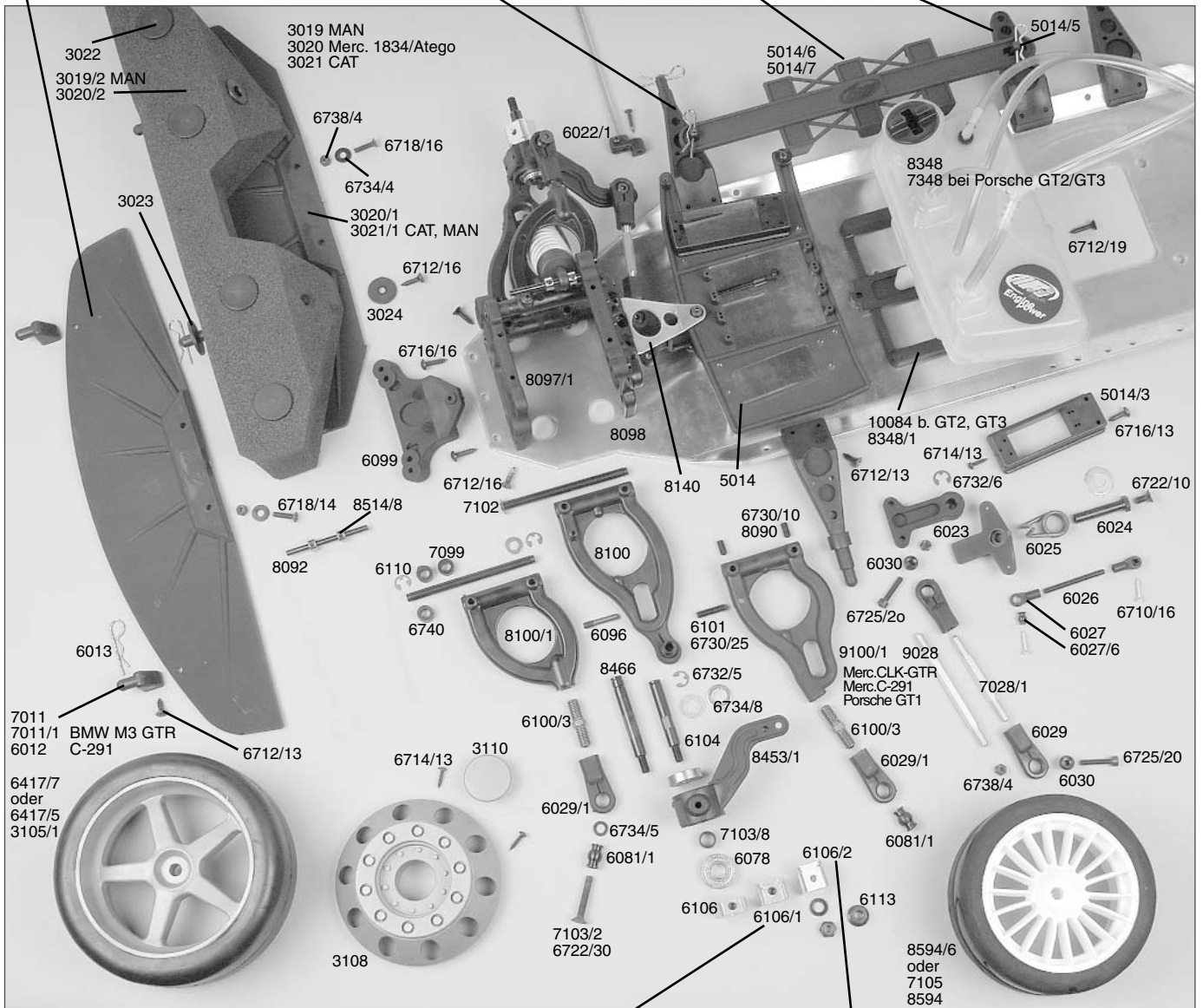
Best.-Nr. 1404 Sportsline Chassis 04 lang 1:5	2049 McLaren, 2079 Porsche Carrera GT, 4049 Audi A4, 7169 Peugeot, 7239 Merc. C-Klasse 04, 7249 Merc. CLK-DTM, 7254 Honda, 7259 Opel V8, 8044 BMW 320, 8049 BMW GTR, 8165 BMW M3 GTR
1405 Sportsline Chassis 04 mittel 1:5	1049 Ren. Megane, 5049 New Beetle, 5064 Chrysler Viper
1406 Sportsline Chassis 04 kurz 1:5	5154 Porsche GT2, 5160 Porsche GT3
3404 Sportsline Chassis 04 lang 1:6, Truck	3049 CAT-Truck, 3053 Merc.-Truck 1834, 3064 Merc-Truck Atego, 3070 MAN-Truck
9404 Sportsline Chassis 04 lang Breitvers. 1:5	9149 Merc. CLK-GTR, 9159 Porsche GT1, 9054 Merc. C-291



- 2020 McLaren
- 4020 Audi A4/ Ren.Megane
- 5020/1 Porsche GT2, GT3
- 5020/2 New Beetle
- 5021 ChryslerViper
- 7020/3 Peugeot
- 7020/4 Honda
- 7020/5 Merc.CLK-DTM
- 7020/6 Opel V8
- 7020/7 BMW M3GTR
- 7020/8 Merc. C-Klasse 04
- 7020/9 Porsche Carrera GT
- 8021 BMW 320
- 9020 Merc. C-291
- 9020/1 Merc. CLK-GTR
- 9020/2 Porsche GT1

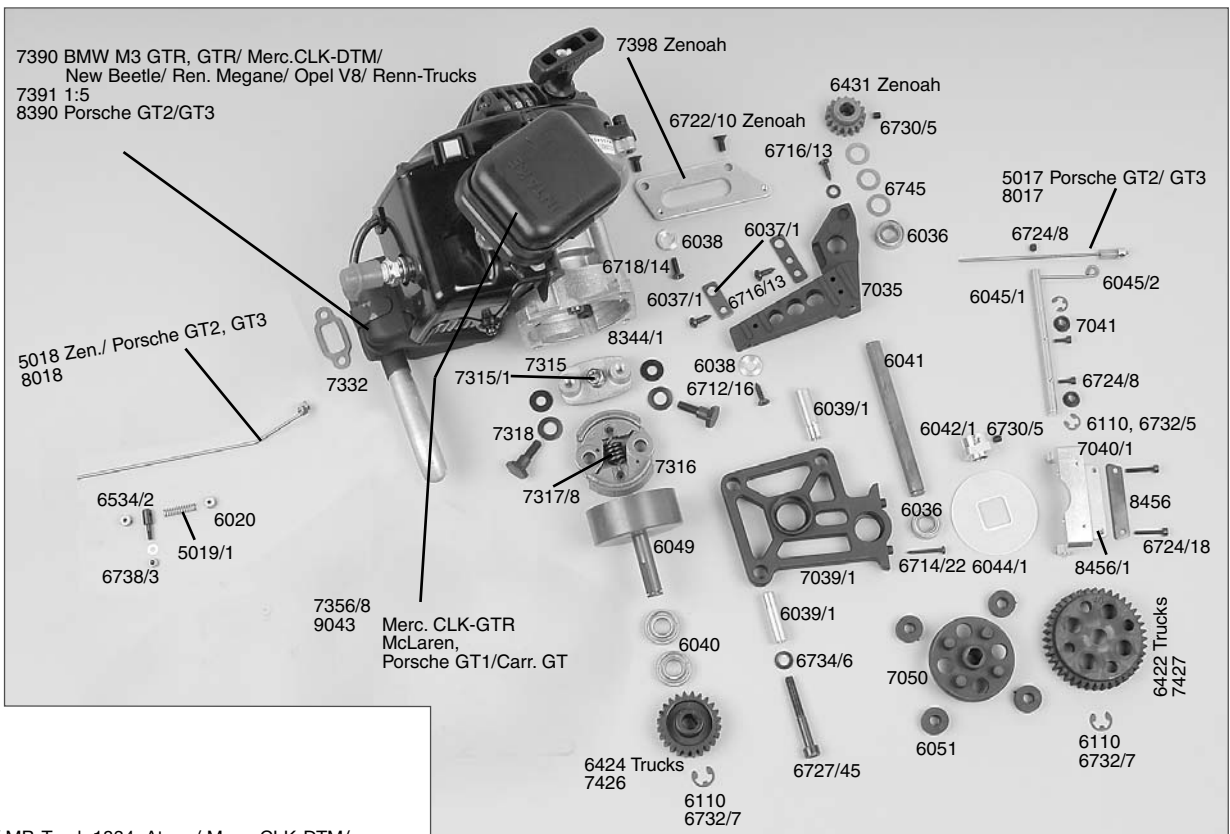
- 3014 McLaren/ MB-Truck 1834, Atego/ Viper
- 5015 New Beetle
- 7012 Audi A4/ BMW M3GTR, 320/ Porsche GT2/ GT3
- 8012 Ren.Megane
- 8013 Merc. CLK-DTM/ Honda/ Opel V8/ Peugeot/ Merc. C-Kl.04
- 9014 CAT-Truck/ MAN-Truck/ C-291
- 9014/1 Merc. CLK-GTR/ Porsche GT1/ Porsche Carrera GT

- 5013 Megane/ BMW M3 GTR
- 5015 New Beetle
- 7013 Audi A4/ Merc.C-Klasse04, CLK-GTR/ BMW 320/ McLaren/ Honda/ Renn-Trucks/ Peugeot/ Viper/ C-291/ Porsche GT1/ Carrera GT
- 5014/6 Megane/ New Beetle/ Porsche GT2, GT3/ Viper
- 5014/7 Audi A4/ BMW 320, GTR, M3 GTR/ McLaren/ Merc. C-Klasse04, CLK-DTM, CLK-GTR/ Peugeot/ Porsche GT1, Carrera GT/ Renn-Trucks/ Opel V8

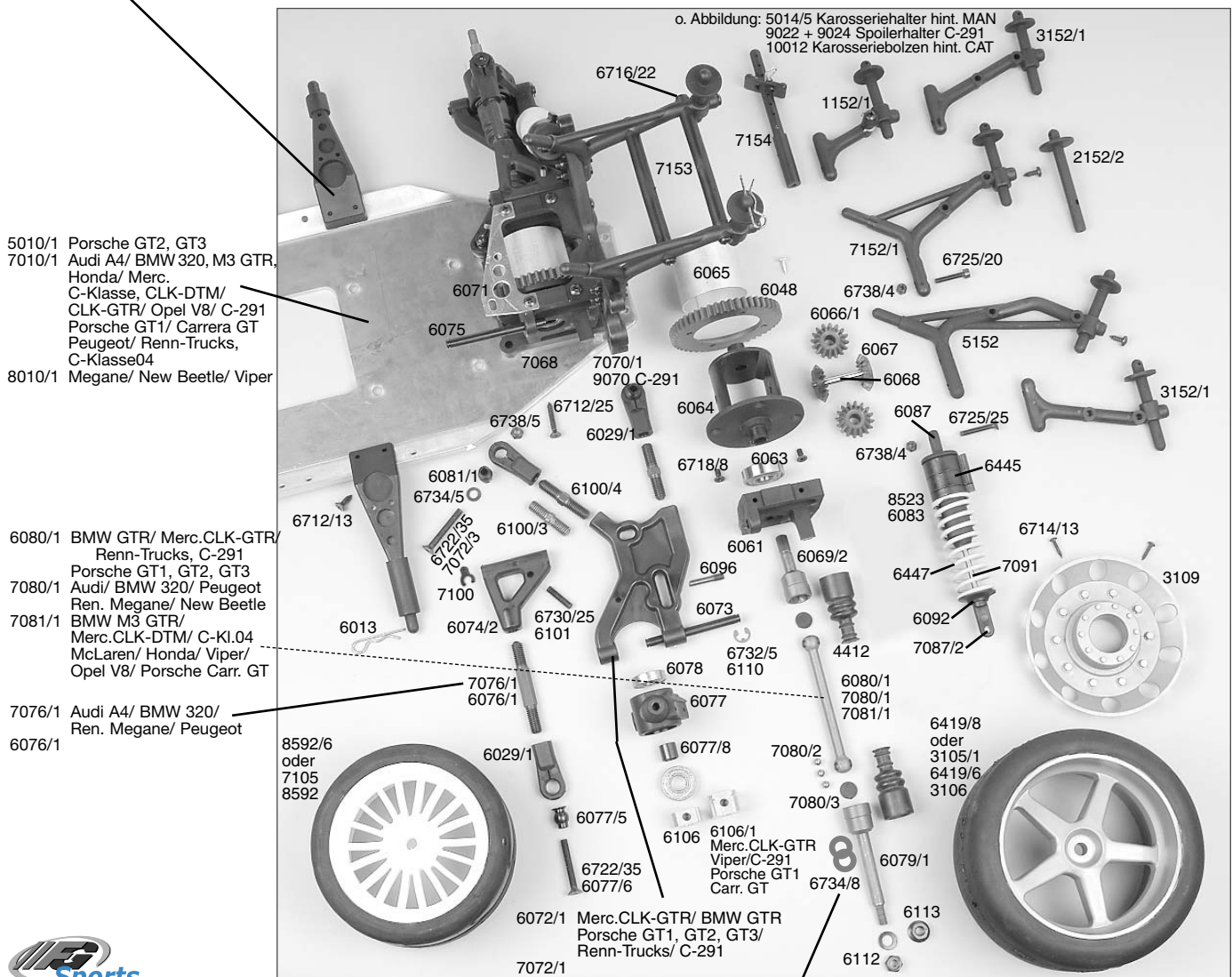


Komplette Schraubenliste siehe Hauptkatalog 3, Seite 208.
The complete list of screws you can find in the main catalog 3, page 208.

6106/1 Porsche GT2, GT3/ Ren.Megane/ Peugeot
6106/2 BMW M3 GTR/ Merc.CLK-DTM/ McLaren/ Honda/ Opel V8



- 3014 McLaren/ MB-Truck 1834, Atego/ Merc. CLK-DTM/
Honda/ Opel V8/ Peugeot/ C-Klasse04
- 7014 BMW M3 GTR/ Porsche GT2, GT3
- 8014 Audi A4/ BMW 320/ Megane/ BMW GTR
- 9014 CAT-Truck/ MAN-Truck/ C-291
- 9014/1 Merc. CLK-GTR/ Viper/ Porsche GT1/ Carr. GT



1 Scheibe bei Merc. CLK-GTR/ Porsche GT1/ Viper/ C-291
2 Scheiben bei McLaren/ Ren.Megane/ New Beetle/ Peugeot